

Program Purpose Statement

PGY1 pharmacy residency programs build on Doctor of Pharmacy (Pharm.D.) education and outcomes to contribute to the development of clinical pharmacists responsible for medication-related care of patients with a wide range of conditions. Residents are eligible for pharmacotherapy board certification and postgraduate year two (PGY2) pharmacy residency training.

The PGY1 residency program is designed to enable the resident to provide progressive pharmacy services in a variety of clinical settings for an acute care community hospital. The resident is exposed to many different clinical and professional elements important to current practices of clinical pharmacy.

Responsibilities include participation in the Pharmacy and Therapeutics committee and the Antimicrobial Stewardship committee meetings and initiatives, precepting students, presenting lectures, and conducting valuable research to expand clinical pharmacy services.

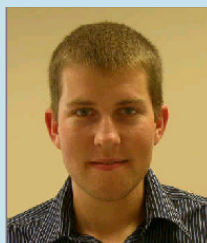
Residents' experiences are customized and adapted throughout the year to allow them to meet their individual goals. Residency preceptors challenge the residents to excel in a supportive community environment and prepare them to be future leaders in the pharmacy profession.

For more information, please contact:

Lynn McArthur, PharmD, MHA
Residency Program Director
lynn.mcarthur@BHSl.com
Phone: 606.523.8589



Josh Bowling, PharmD
Residency Program Preceptor
joshua.bowling@BHSl.com
Phone: 606.523.8565



Serving Our Community

As a nonprofit organization, Baptist Health has made a commitment to our community to provide care and services that go far beyond what is expected of a hospital, including charity care, education, community involvement and partnerships. It is a relationship in which the community always wins. Baptist Health admits and serves patients equally, without regard to race, color or national origin, disability, sex or religion.



Accredited



1 Trillium Way
Corbin, KY 40701
606.528.1212

BaptistHealth.com/Corbin

PHARMACY RESIDENCY

Postgraduate Year One (PGY1)



About Baptist Health Corbin

Baptist Health Corbin is a 273-bed, acute care facility providing a wide variety of healthcare services to the residents of Whitley, Knox, Laurel, Bell, Clay, McCreary, and Harlan counties in Kentucky and nearby Jellico, Tennessee in Campbell County. The hospital offers a full continuum of care from inpatient care to rehab services to behavioral health. Additional services include an interventional cardiology program, orthopedics, OB/GYN, general surgery, level 2 nursery and outpatient oncology.

The pharmacy's mission is to provide safe and effective pharmaceutical care to the patients of Baptist Health Corbin.

Residency Learning Experiences

Required Rotations

- Orientation
- Internal Medicine
- Critical Care
- Oncology
- Transitions of Care
- Ambulatory Care
- Internal Medicine II with a focus on infectious diseases

Elective Rotations

- Critical Care II
- Oncology II
- Ambulatory Care II
- Transitions of Care II

Longitudinal Experiences

- Project Management
- Hospital Pharmacy Practice
- Pharmacy Management

Rotation experiences are six weeks in length. Residents are required to staff every third weekend, one major and one minor holiday.



Application Process and Qualifications

Baptist Health Corbin participates in the Resident Matching Program and the Pharmacy Online Residency Centralized Application Service (PhORCAS™).

Prospective residents are required to submit the following documents to PhORCAS™:

- Curriculum vitae
- Official transcript
- Three personalized letters of recommendation
- Letter of intent

Candidates must have obtained a Doctor of Pharmacy degree from an accredited college of pharmacy in the United States.

Candidates must be eligible for licensure in Kentucky. Residents must be licensed by Oct. 1.

Pharmacy Services

Pharmacy Services included:

- Admission and Discharge Medication Reconciliation
- Patient Assistance and Prior Authorization Program
- Ambulatory Pharmacist ran clinics including MTM, Anticoagulation, Hepatitis C, and Lipid
- Specialty Pharmacy Services
- 24 hr centralized distribution model with decentralized clinical support
- Meds to Beds Program
- Outpatient Oncology and Non-Oncology Infusion Services

Pharmacy Residency Information

The Postgraduate Year One (PGY1) Pharmacy Residency Program conducted by Baptist Health Corbin is an accredited program with the American Society of Health-System Pharmacists.

- 12 month duration of residency
- Two positions available
- Estimated \$48,000 stipend per year
- Approximate start date is June 10 each year

Resident activities include, but are not limited to:

- In-services
- Journal clubs
- Staffing
- Precepting pharmacy students
- Major residency project
- Mid-year poster presentation
- Drug information
- P&T committee
- MUE and new drug reviews
- ACLS certification
- Teaching certificate program through an affiliation with the University of Kentucky College of Pharmacy

The resident will be required to keep an organized electronic binder of all projects, papers, lectures, evaluations, etc., completed throughout the year.

The resident will be awarded a certificate upon successful completion of all program requirements.

Benefits

Residents are eligible for the following benefits:

- Health insurance
- 24 paid vacation days
- Travel reimbursement
- Administrative leave for conferences
- Retirement program